



**tax**WorkFlow

**TaxWorkFlow**

## **Firewall Settings Guide**

Version 1.1

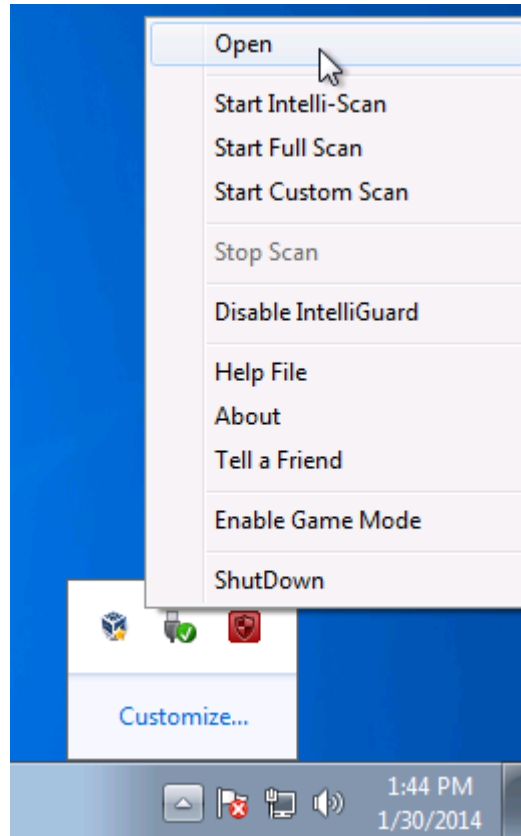
June 06, 2015

For all questions regarding this document, please email at:

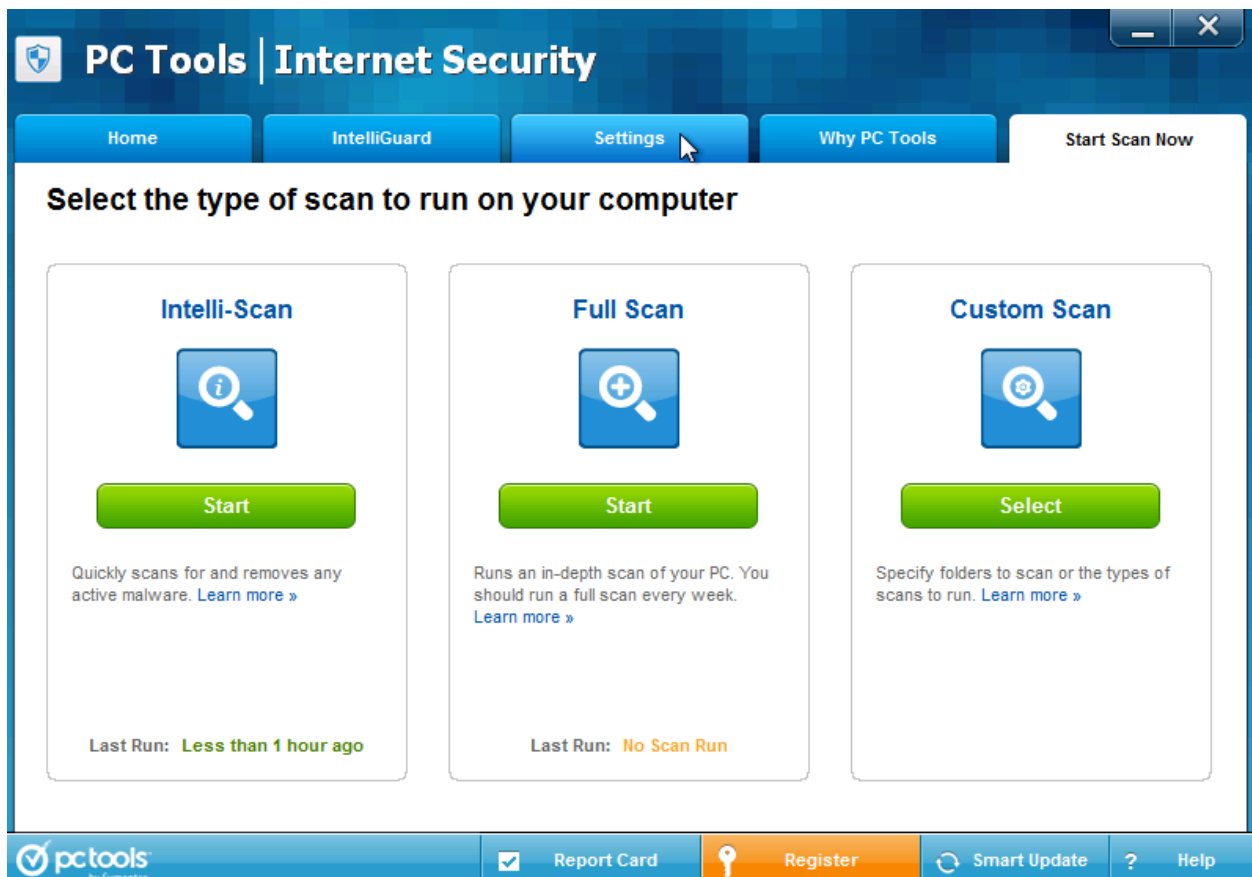
email: [support@thetaxworkflow.com](mailto:support@thetaxworkflow.com)

# 1. PC Tools Internet Security

1.1. Open your firewall's main window.



1.2. Select "Settings" tab.



1.3. Select “Firewall -> Applications”, click “Add” button and browse to TaxWorkFlow.exe.



1.4. Click on the ⚠ icon in the “In” column and select “Allow All”.



1.5. Repeat steps from 1.3 to 1.4 again for the TWFPDFPrinter.exe file. It should be located in the TWFPDFPrinter subfolder of the application’s folder (by default it is usually C:\Program Files (x86)\TaxWorkFlow\TWFPDFPrinter\TWFPDFPrinter.exe).