



taxWorkFlow

Tax Work Flow

Installation Guide

Version 1.1

August 27, 2014

For all questions regarding this document, please email at:

email: support@thetaxworkflow.com

Table of contents

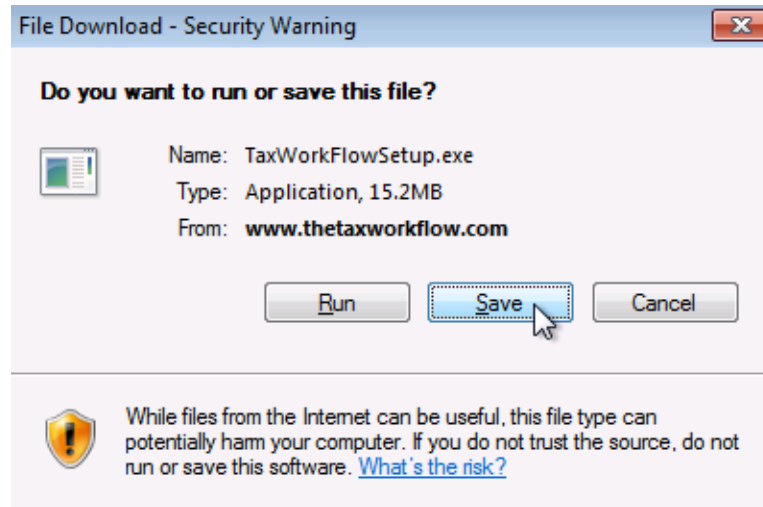
INSTALLING TAXWORKFLOW 3

UNINSTALLING TAXWORKFLOW 10

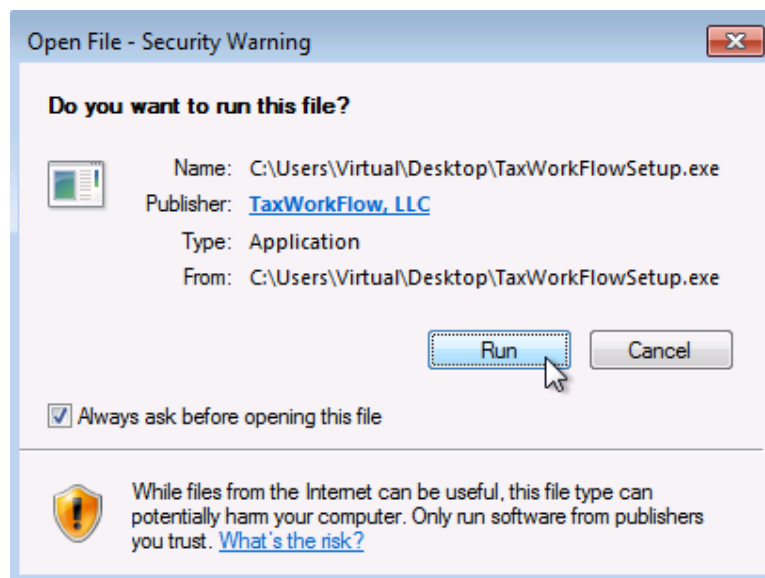
INSTALLING TAXWORKFLOW

1. Download the installer for TaxWorkFlow software from

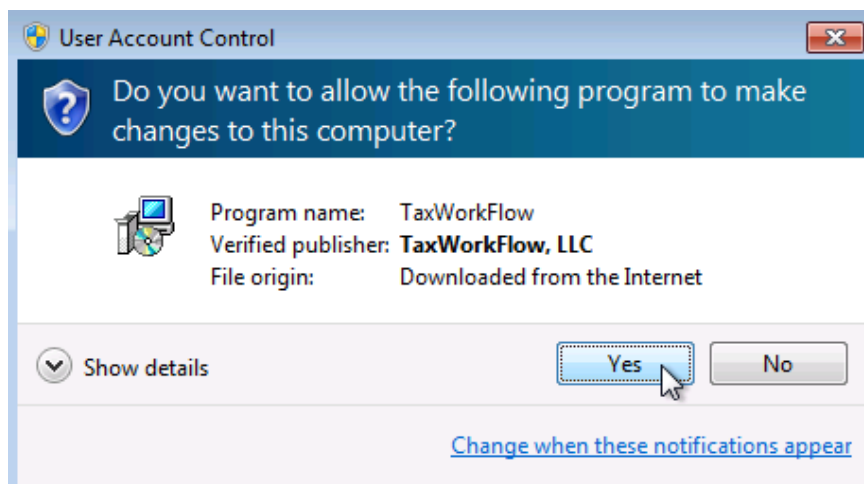
<http://www.thetaxworkflow.com/release/TaxWorkFlowSetup.exe>



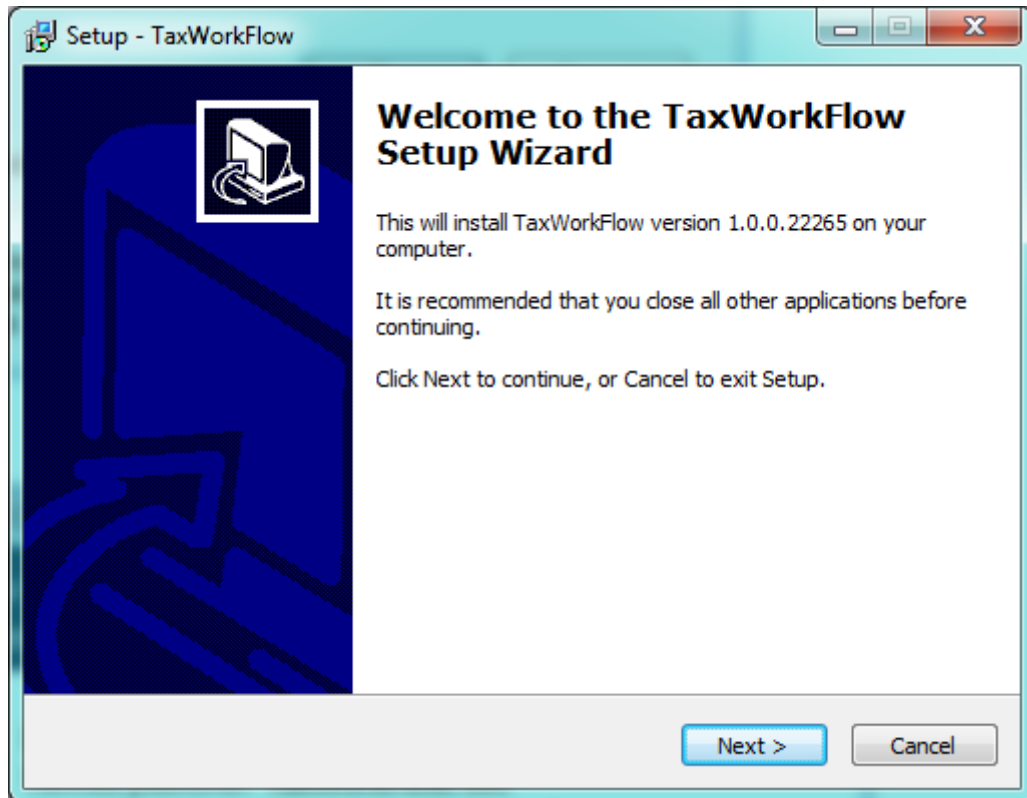
2. Launch the downloaded installation wizard and click Run.



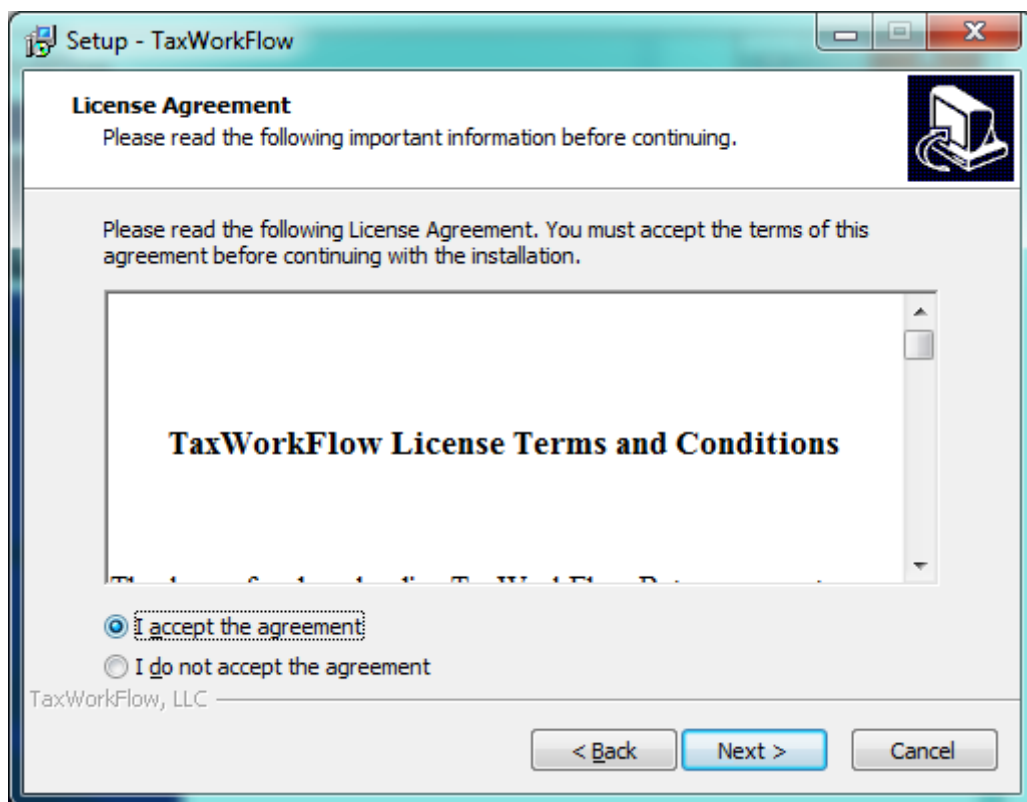
3. Click Yes.



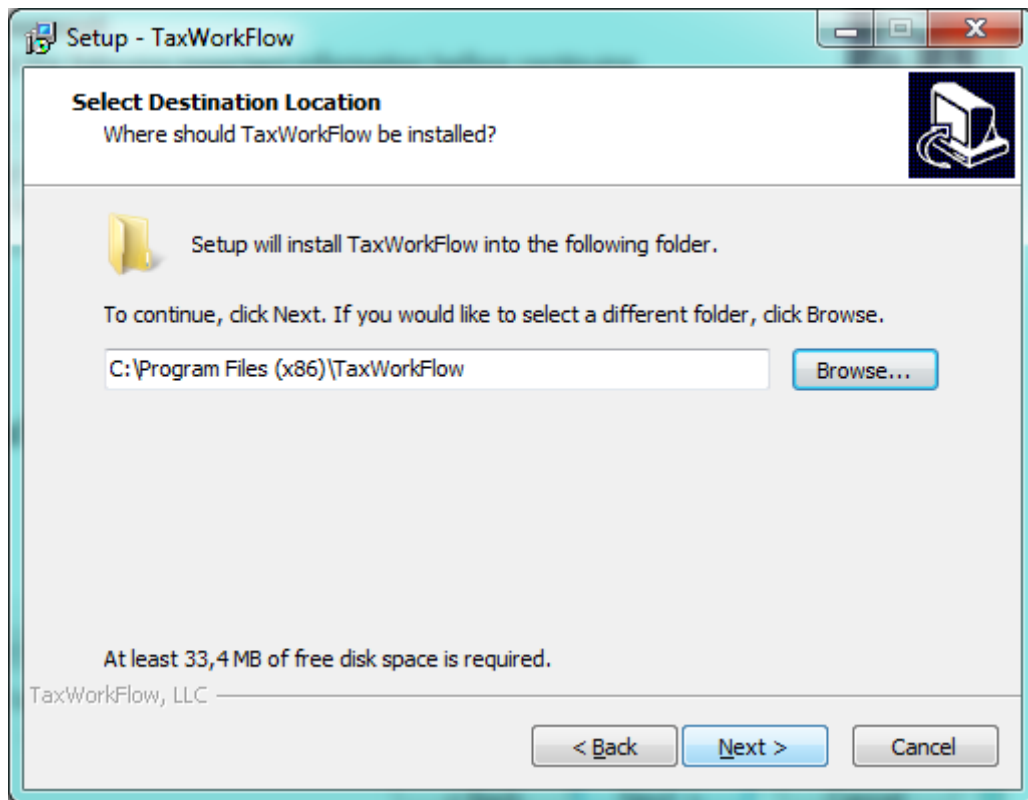
4. Click Next.



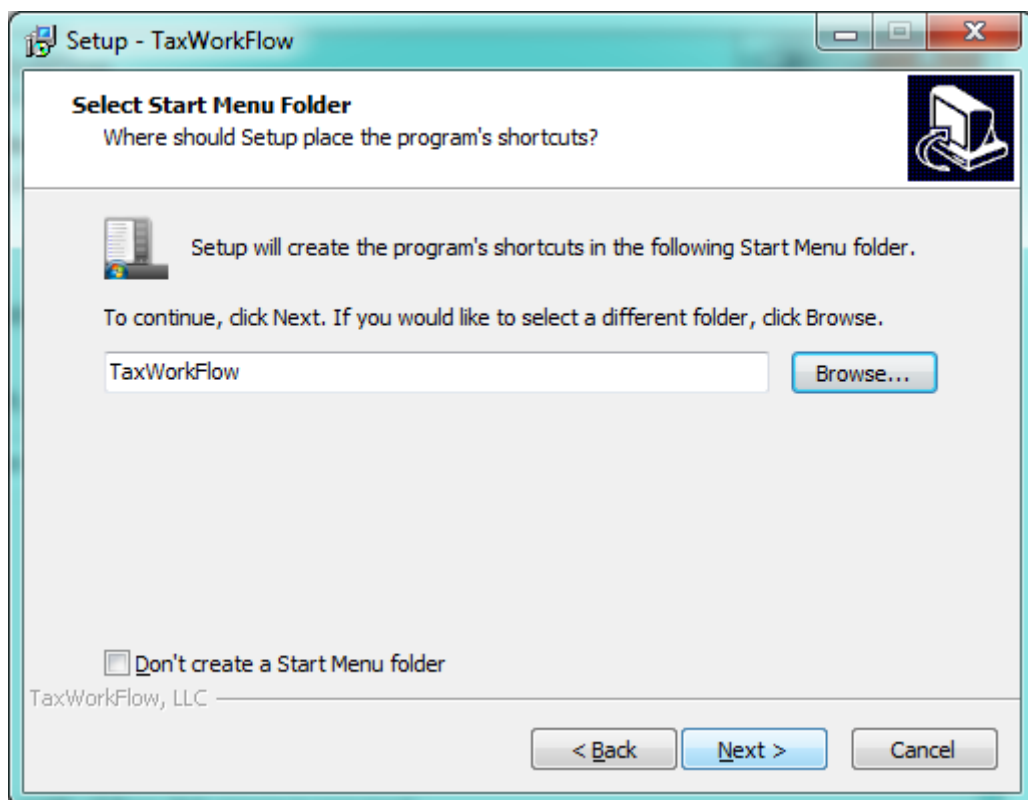
5. Read and accept the license agreement and click Next.



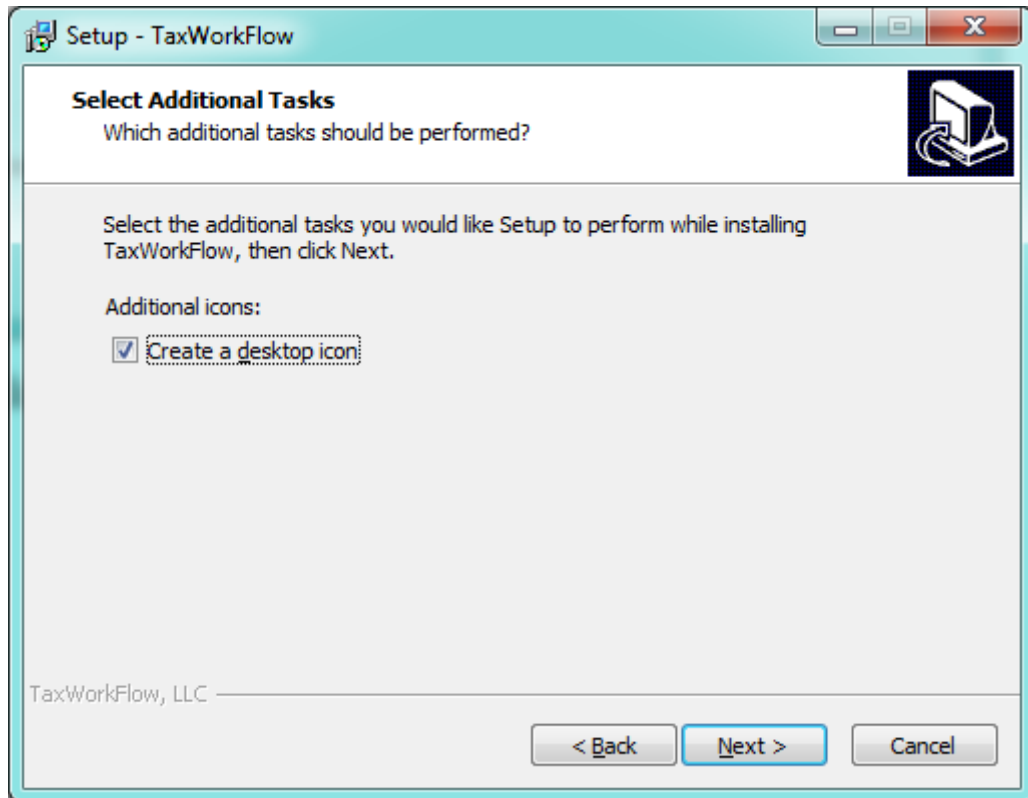
6. Select the folder you want TaxWorkFlow will be installed in and click Next.



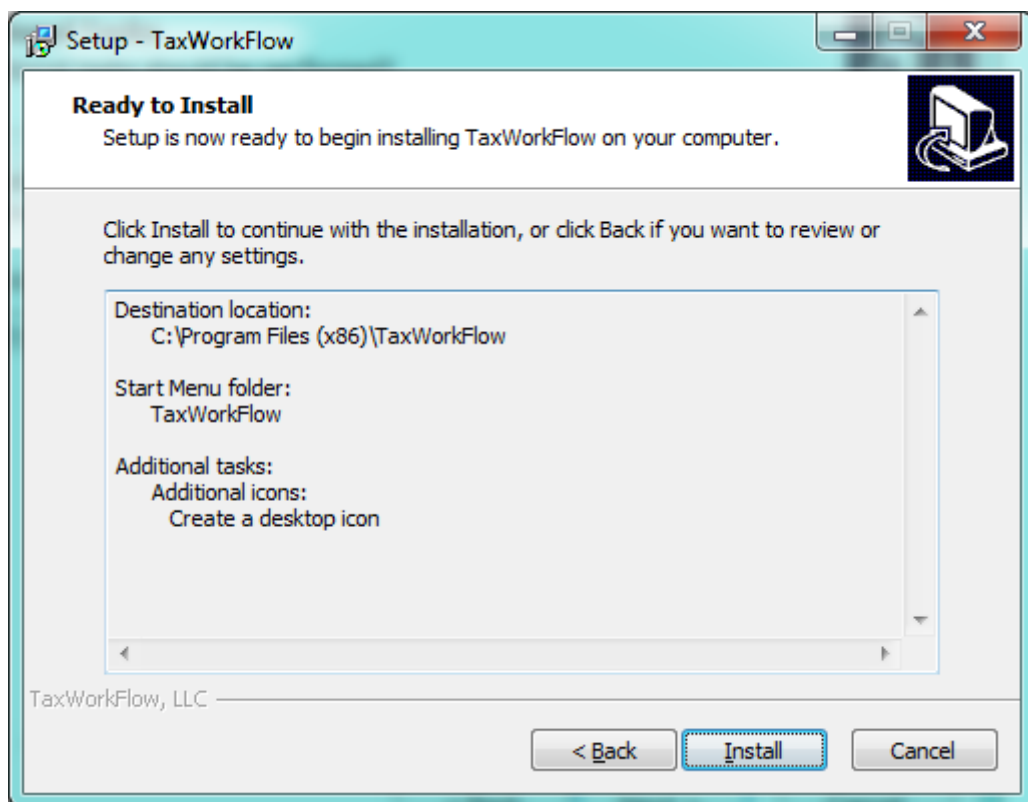
7. Specify the start menu folder for the application and click Next.



8. Choose the additional icons you want the setup wizard will create and click Next.

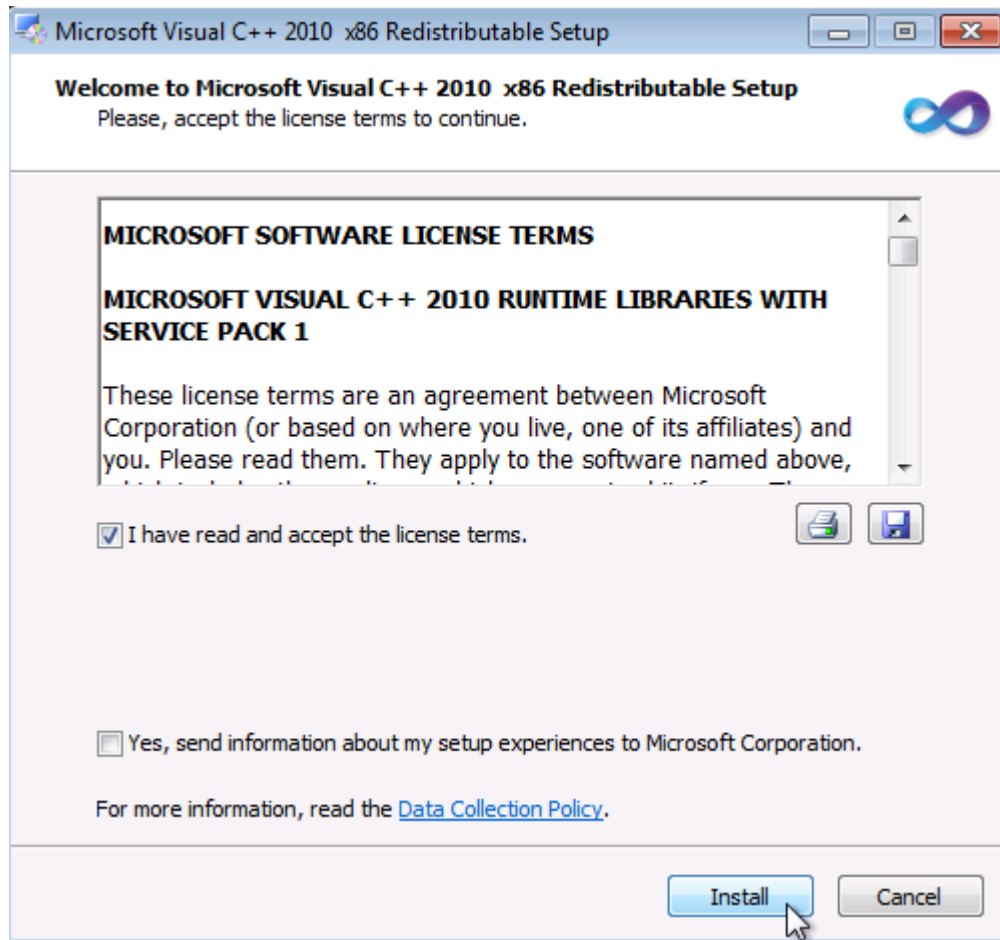


9. Check that there were no mistakes during previous steps and click Install.

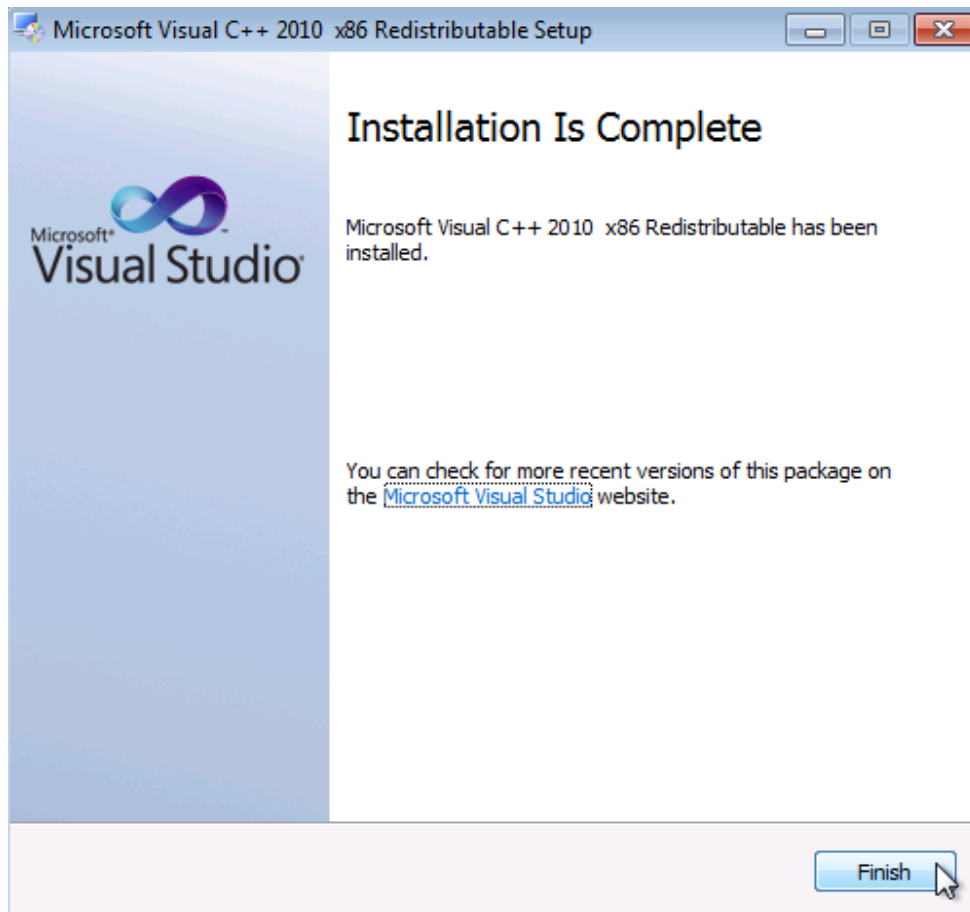


10. At this step the setup wizard will try to install Microsoft Visual C++ 2010 x86 Redistributable Maintenance which is necessary for establishing connection to the TaxWorkFlow cloud.

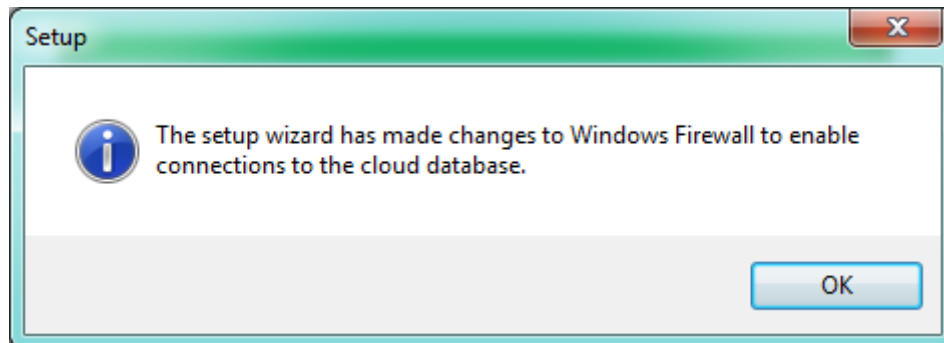
- 10.1. If these common libraries are already installed you will skip this step.
- 10.2. If these libraries are not installed you will see the dialog as follows.



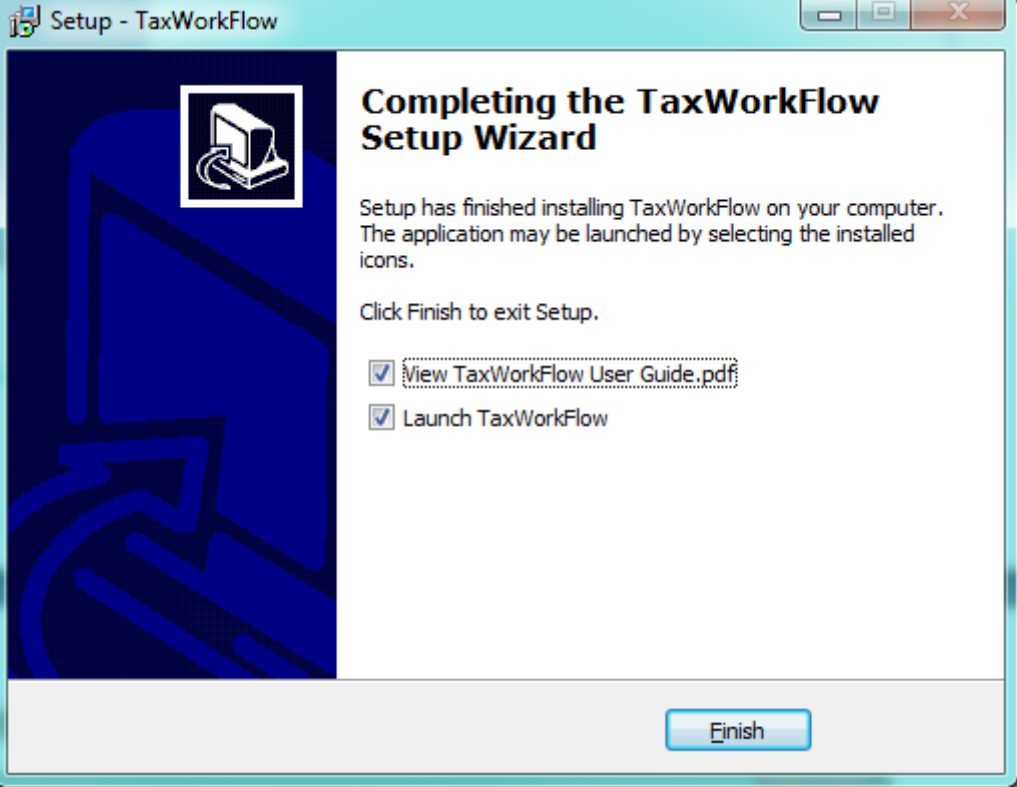
Read and accept the license terms and press Install. At the next step press Finish.



11. You will see such notification. Click OK.

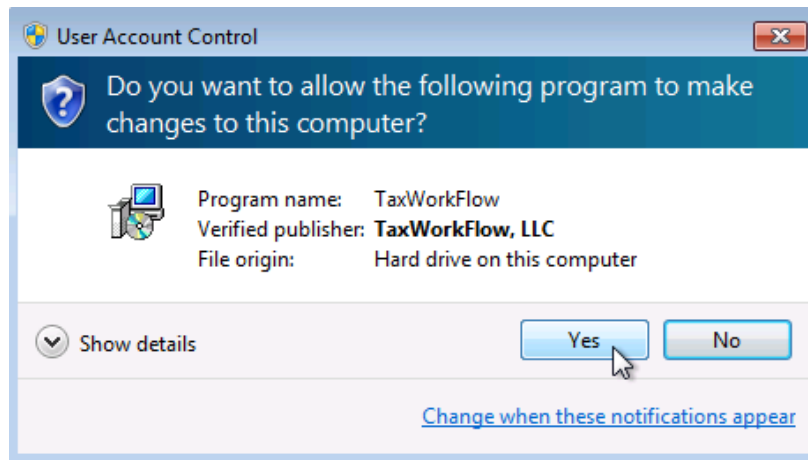


12. Click Finish.

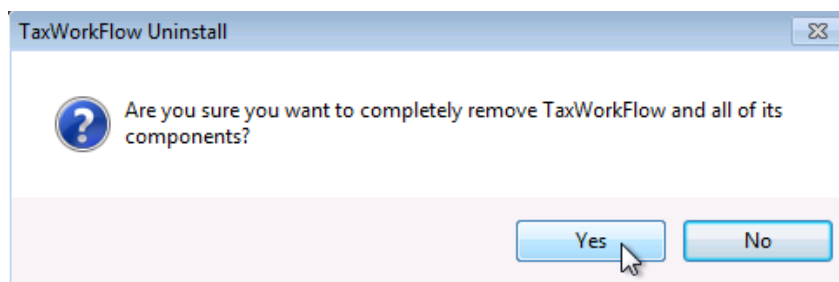


UNINSTALLING TAXWORKFLOW

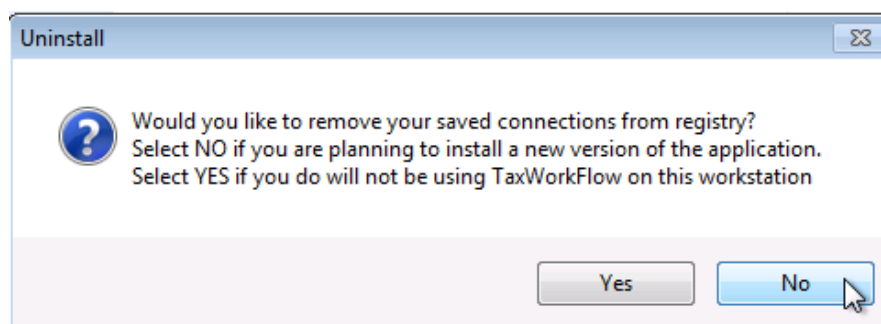
1. Launch TaxWorkFlow's uninstall wizard. For example select Uninstall TaxWorkFlow in the applications start menu folder. And click Yes.



2. Confirm that you want to remove the application.



3. Decide whether you want to save your TaxWorkFlow's connections for future use at this machine.



4. Click OK.

