



taxWorkFlow

TaxWorkFlow

Firewall Settings Guide

Version 1.1

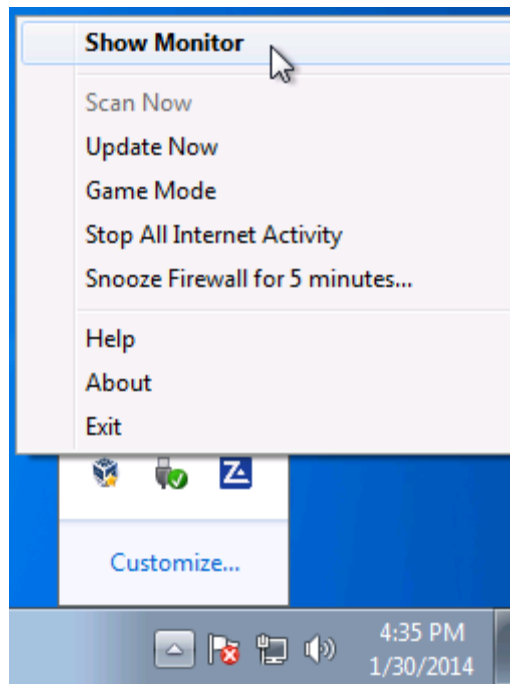
June 06, 2015

For all questions regarding this document, please email at:

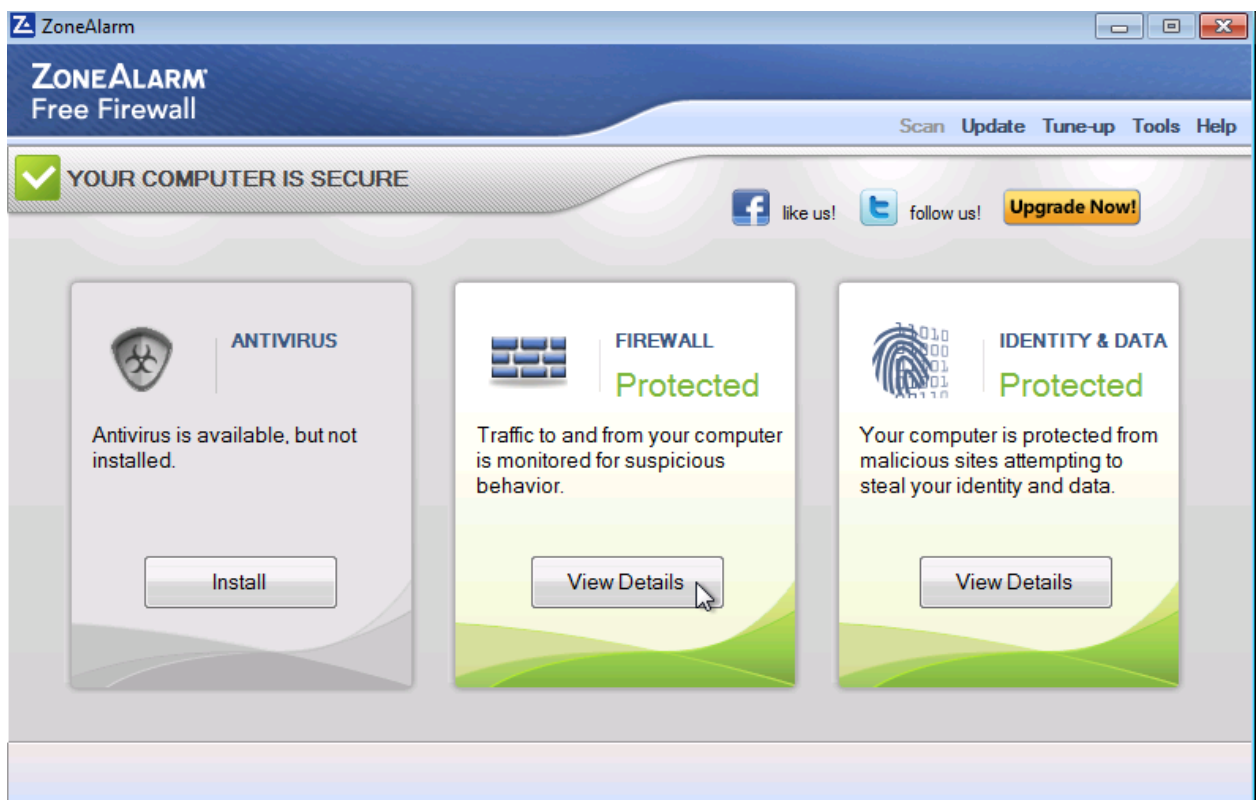
email: support@thetaxworkflow.com

1. ZoneAlarm Free Firewall

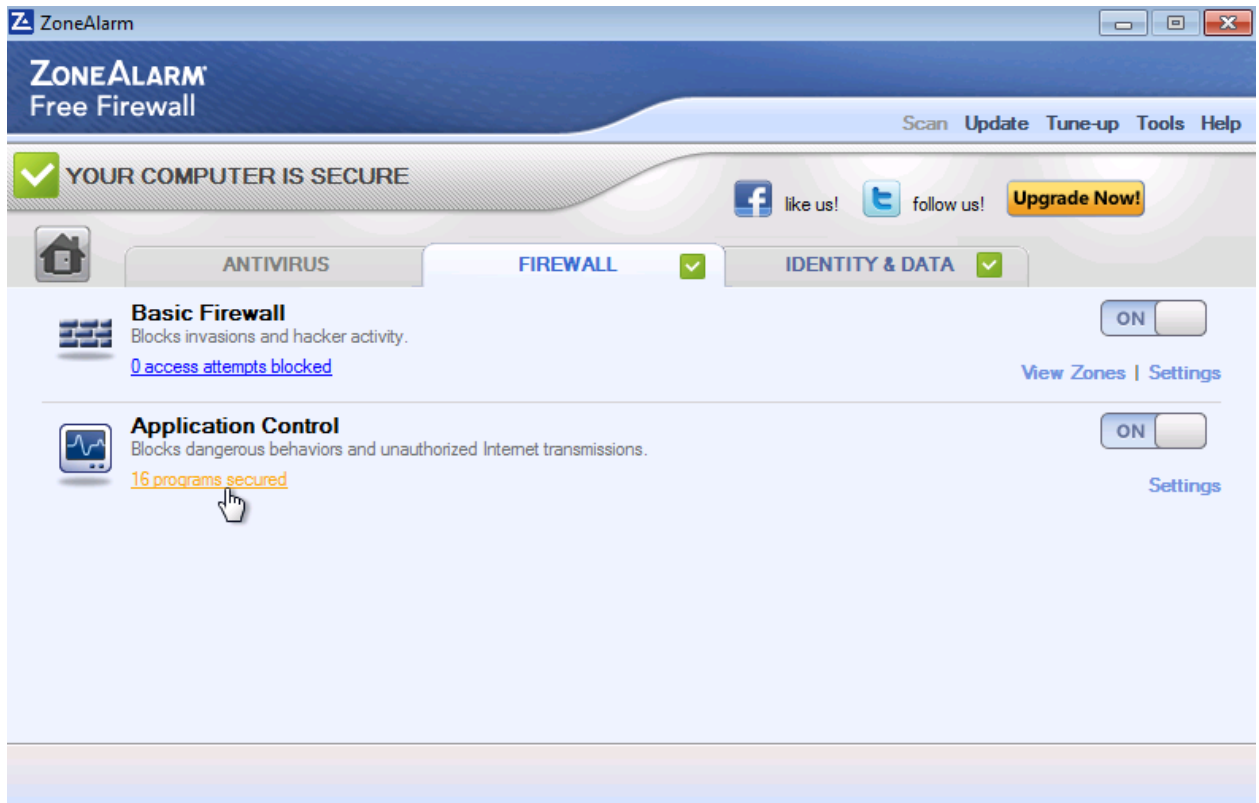
1.1. Open your firewall's main window.



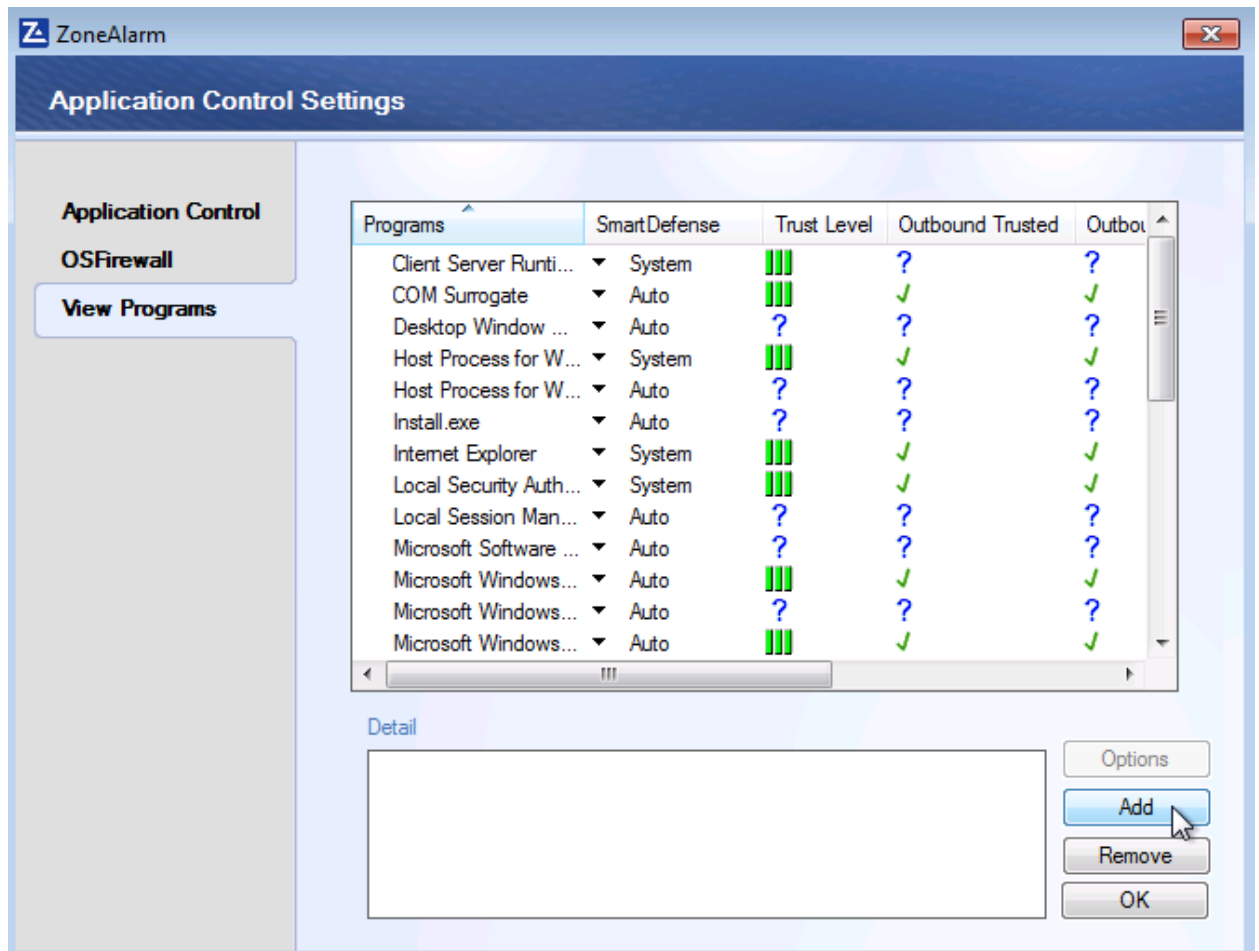
1.2. Click “View Details” in “Firewall” section.



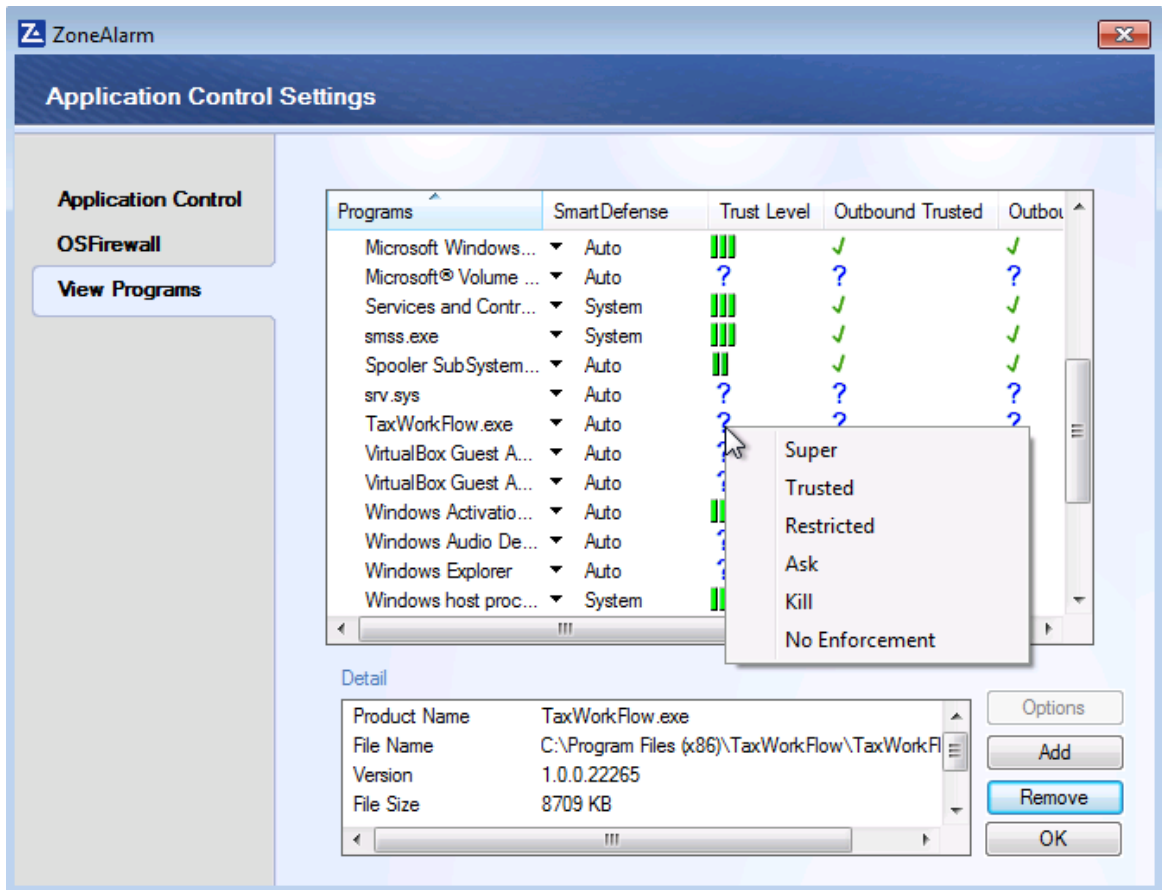
1.3. Click “# programs secured” link under the “Application Control” section.



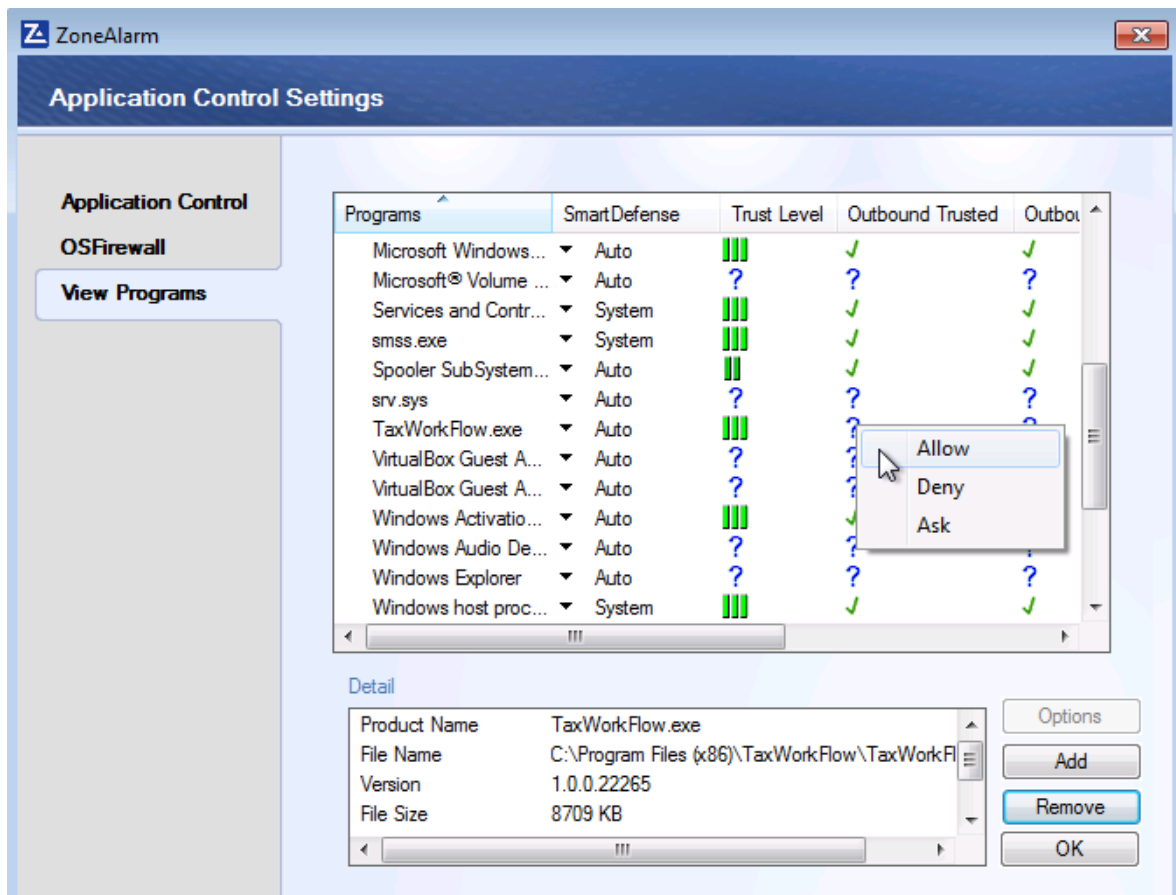
1.4. Select “View Programs” tab. Click “Add” button and browse to TaxWorkFlow.exe if it isn’t already in the list.



1.5. Change “Trust Level” on “Super” or “Trusted” for TaxWorkFlow.exe.



Select “Allow” in all other columns for TaxWorkFlow.exe.



1.6. Repeat steps from 1.4 to 1.5 again for the TWFPDFPrinter.exe file. It should be located in the TWFPDFPrinter subfolder of the application’s folder (by default it is usually C:\Program Files (x86)\TaxWorkFlow\TWFPDFPrinter\TWFPDFPrinter.exe).